

Accessories that support your early defibrillation program



Carrying Case



Hard Case



Fast Response Kit

Item #68-PCHAT

The Fast Response Kit contains tools and supplies typically needed for patient care and personal protection: 2 pairs of hypoallergenic nitrile gloves, a Laerdal pocket breathing mask, paramedic scissors, a chest hair razor and a large, extra-absorbent paper towel. These items are housed in a zippered pouch that attaches securely to the handle of the FRx Carry Case or can be stored inside the Hard Case.

Carry Cases

The HeartStart FRx Defibrillator is designed for use with a carry case. Two carrying cases are available for the FRx Defibrillator: the FRx Carrying Case and the Hard Case.

FRx Carrying Case Item #989803139251

Constructed with easy-to-clean urethane, this case is durable enough to withstand bumps and drops, and provides easy access with a VELCRO® closure. The FRx case holds and protects your FRx Defibrillator, a spare battery, two pads sets, the Infant/Child Key and Quick Reference Guide (Item #989803138601). Includes strap.

Case dimensions: 9.5 x 8.0 x 5.0 in (24.1 x 20.3 x 12.7 cm) W x H x D

Hard Case Item #YC

This waterproof, impact-resistant hard case was designed for the most rugged uses. Its foam interior will hold your HeartStart FRx, HeartStart OnSite or HeartStart FR2+ Defibrillator and the contents of a Fast Response Kit.

Case dimensions: 3.25 x 11.5 x 5.75 in (33.5 x 29 x 14.5 cm) W x H x D



Long-life batteries

Four Year Battery Item #M5070A

The HeartStart FRx Defibrillator comes equipped with a disposable, lithium manganese dioxide, long-life battery that will typically last—in standby mode—for four years in the defibrillator. A spare battery should be stored with the defibrillator. Additional batteries should be purchased for defibrillators used frequently for training or demonstrations. This battery is also compatible with HeartStart OnSite/HSI Defibrillators.

Aviation Battery, FRx Defibrillator Item #989803139301 (U.S. only)

The Aviation Battery meets the specifications of the Four-Year Battery and the FAA TSO C-142 regulation for use on commercial aircraft.



SMART Pads II

Item #989803139261 (Prescription Required)

Pads for all patients. Save valuable time in an emergency with pads for use on adults, children and infants. SMART Pads II eliminate the expense of having to purchase different pads sets for different patient types. Equipped with a HeartStart-compatible plug for easy hand-off to ALS defibrillators with adapters. These pre-connected pads are packaged in a semi-rigid pads case for added protection. For patients less than 8 years old or 55 lbs. use with the Infant/Child Key.



Philips—The trusted choice

- One of the world's largest medical products companies with annual revenue of over \$6 billion
- History of innovation. Philips introduced the medical X-ray tube in 1918, the audiocassette in 1963, the first VCR and created compact disc technology
- With over 200,000 automated external defibrillators installed, Philips has more AEDs on the job, in the air, in the classroom and in your neighborhood than anyone else²
- Over 4.5 billion HeartStart Defibrillator service hours logged, with an additional 2.7 million hours added every day
- Over 17% of Fortune 1000 companies, 8 out of 10 major airlines and 43 professional sports teams rely on Philips HeartStart Defibrillators

Philips Medical Systems is part of Royal Philips Electronics

On the Web

www.philips.com/heartstart

Via email

medical@philips.com

By postal service

Philips Medical Systems
3000 Minuteman Road
Andover, MA 01810-1085

Asia

Tel: +852 2821 5888

Europe, Middle East and Africa

Tel: +31 40 27 63005

Latin America

Tel: +55 11 2125 0764

North America

Tel: +1 800 934 7372

© Koninklijke Philips Electronics N.V. 2005 All rights reserved.
Reproduction in whole or in part is prohibited without the prior written consent of the copyright holder.

Philips Medical Systems North America Corporation reserves the right to make changes in specifications or to discontinue any product at any time without notice or obligation and will not be liable for any consequences resulting from the use of this publication.

Printed in the U.S.
DOC #452297700501 * 2005-02

palmOne is a trademark owned by palmOne, Inc.

VELCRO is a registered trademark of Velcro Industries B.V.

References

¹Cummins RO, et al. Improving survival from sudden cardiac arrest: The "Chain of Survival" concept. A statement for health professionals from the Advanced Cardiac Life Support Subcommittee and the Emergency Cardiac Care Committee, American Heart Association, Circulation 1991; 83:1832-1847.

²Frost and Sullivan

PHILIPS

Philips HeartStart FRx Defibrillator

Supplies and accessories



Rugged and ready to use

On the scene with law enforcement, on the field with student athletes or on the job with employees, the Philips HeartStart FRx Defibrillator is the solution for treating SCA from ventricular fibrillation in environments and conditions too demanding for many other defibrillators.

To support you in the treatment of sudden cardiac arrest victims, Philips offers a full range of supplies and accessories for the HeartStart FRx Defibrillator. These products are designed and manufactured to a high level of quality for ease-of-use, reliability and durability.

HEARTSTART
DEFIBRILLATORS

Infant/Child Key

Item #989803139311 (Prescription Required)

The unique Infant/Child Key is used only with the FRx Defibrillator when treating an infant or child who is under 55 lbs or 8 years old. Once the Infant/Child Key is inserted, the FRx automatically reduces the defibrillation energy and provides specific voice and CPR coaching specifically geared for treatment of infants/children. Graphics on the key show proper pad placement for infants and children.



Training Pads II

Item #989803139271

Facilitate training on the HeartStart FRx Defibrillator. Simply plug in the Training Pads II to activate the FRx's training mode and suspend the defibrillator's ability to deliver a shock. Users can run eight different training scenarios. Plus, one set of Training Pads II can be used to train for adult and infant/child* resuscitation. The defibrillator's voice instructions, including CPR coaching will be appropriate for treating the simulated victim.

Each training pads case contains a pair of reusable adhesive pads with integrated cable and connector. The case is packaged with an adult pads placement guide, an illustrated guide for using the pads, and Instructions for Use. Replacement Training Pads II (Item #989803139291) are available, too, consisting of just a set of pads/wire/plug. An infant/child pads placement guide is also available (Item #989803739281).

Training Pads II can be used with the HeartStart FRx or the HeartStart FRx Trainer on a manikin connected with an external manikin adapter (Item #M5089A).



HeartStart Pads Adapters

Smart Pads II can also be used with defibrillators from other manufacturers, when equipped with Philips HeartStart Adapters. (Prescription Required)

Adapter Model 05-10200

Fits Philips hands-free cables (Item #M3507A or M1750A/B) for connection to Hewlett-Packard CodeMaster 100, XE, XL and XLT+; Philips Heatsream/HeartStart XL and XLT; HeartStart MRx and Laerdal Heartstart 4000 defibrillator/monitors.

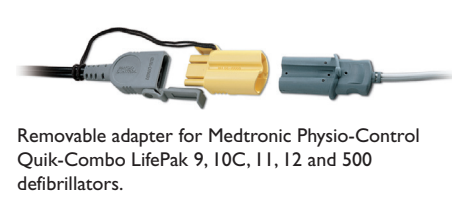


Permanent Configuration



Removable Configuration

Adapter Model 05-10000



Removable adapter for Medtronic Physio-Control Quik-Combo LifePak 9, 10C, 11, 12 and 500 defibrillators.

Adapter Model 05-10100



Removable adapter for Zoll I200, I400, I600 and M-Series defibrillators.

Removable Configuration

Instructor Training Toolkit

Toolkit Item #989803139321 DVD only Item #989803139341

The Training Toolkit includes instructional aids, such as a DVD and CD, with a PowerPoint presentation, for teaching groups of people to operate the HeartStart FRx Defibrillator. A DVD training disc can also be purchased separately from the toolkit.

HeartStart FRx Trainer

Item #861306 Available soon

This training version of HeartStart FRx Defibrillator includes Trainer, Training Pads II, Carry Case, Instructions for Use, Quick Reference, and manikin adapters. Can be used on a manikin connected to an internal manikin adapter (Item #M5088A) or an external manikin adapter (Item #M5089A).



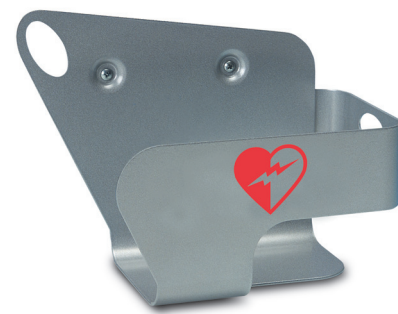
Surface Mounted Cabinet



Semi-Recessed Cabinet



Basic Surface Mounted Cabinet



Defibrillator Cabinets

HeartStart Defibrillator Cabinets are constructed of heavy-gauge steel and tempered glass to protect HeartStart Defibrillators from theft, vandalism and the elements. Each cabinet is equipped with an audible alarm and flashing lights powered by two 9-volt alkaline batteries to attract attention, to mobilize assistance or deter theft. Opening the cabinet door activates the alarm. For locations where a siren is inappropriate, the audible alarm can be disabled.

In buildings with a central security system, your facilities staff or alarm company can connect the cabinet alarm to your system for a more coordinated response. The alarm can also be connected to a programmable auto-dialer.

Three different cabinets are available:
Surface Mounted Cabinet Item #PFE7024D

Provides easy installation without cutting into walls.

Dimensions: 16 x 22.5 x 6 in (41 x 57 x 15 cm) W x H x D

Weight: 19 lbs (8.6 kg)

Semi-Recessed Cabinet Item #PFE7023D

This semi-recessed model is inserted into a wall cut-out. Perfect where Americans with Disabilities Act (ADA) regulations are a consideration.**

Recessed compartment: 14 x 22 x 6 in (36 x 56 x 15 cm) W x H x D

Footprint on wall: 16.5 x 24.5 x 2.5 in (42 x 62 x 6 cm) W x H x D

Weight: 20 lbs (9 kg)

Basic Surface Mounted Cabinet Item #989803136531

This highly durable cabinet mounts on the wall.

Dimensions: 16.5 x 15 x 6 in (42 x 38 x 15 cm) W x H x D

Weight: 11.9 lbs (5.4 kg)

AED Wall Sign

Item #M3858A

Add an AED wall sign above a wall mount bracket or cabinet to give greater visibility to the defibrillator, making it easier to locate in an emergency.



Wall Mount Bracket

Item #M3857A

The Wall Mount Bracket is designed specifically for housing a Philips HeartStart Defibrillator and its accessories. The HeartStart FRx can be tethered to the wall mount with a breakaway secure-pull seal (Item #M3859A includes set of 10) to discourage tampering. A broken seal indicates that the defibrillator has been removed from the wall mount and accessories may need replenishment.

Data Management

HeartStart Case Capture Item #989803143051

The HeartStart FRx Defibrillator automatically stores data in its internal memory. Your medical director or emergency services provider may want access to this information after each use. The infrared data port allows easy transmission of information without cables or hardware compatibility issues. Data can be transmitted to a palmOne™ PDA and later transferred to a PC and viewed with HeartStart Event Review Software.



HeartStart Event Review Software Item #M3834A (Prescription Required)

HeartStart Event Review and Event Review Pro software provide easy-to-use data management solutions for electronically capturing, reporting, and managing your cardiac arrest case data, whether you are interested in data collection, case review, response analysis, data trending, or overall emergency program performance evaluation. Consult your sales representative to determine the best Event Review application to fit your needs.



HeartStart Configure Item #989803143041 (Prescription Required)

HeartStart Configure helps program administrators configure the FRx to medical protocols.

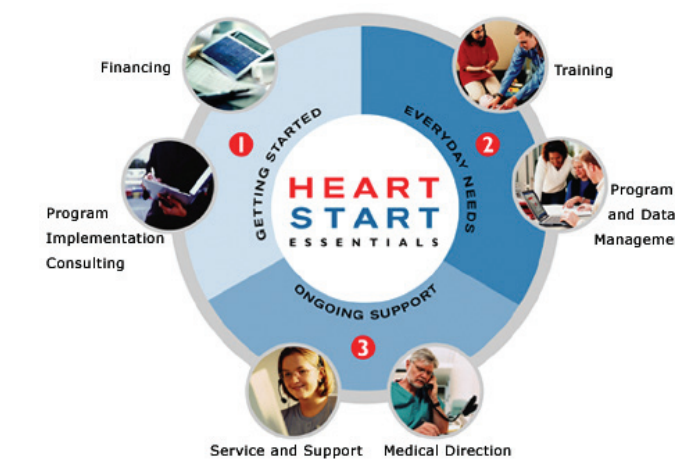
Infrared Data Cable Item #ACT-IR

Using the Infrared Data cable connected to a PC running HeartStart Event Review data management software, data can be transferred for permanent storage as well as for viewing and reporting.



HeartStart Essentials— a comprehensive solution

Philips helps implement a comprehensive program with most everything you and your medical director will need to help save a life from sudden cardiac arrest. We'll get you started with pre-implementation consulting and site assessments. We can manage your everyday needs including medical direction from a licensed physician, web-based program management, data management software, and responder and instructor training. Philips offers ongoing support with a five-year warranty, optional extended warranty and continued customer support from supplies ordering to technical assistance.



* To facilitate training on an infant or child, the Infant/Child Key must be engaged.

** The Americans with Disabilities Act requires that objects not protrude more than 4 inches into foot traffic areas of open aisles and walkways unless the object's bottom edge is no higher than 27" from the ground.